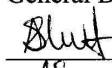


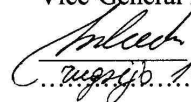
JSC "SPORTINĖ AVIACIJA"	Page 1
Service Bulletin No. 019.5.52.003 A	Pages 8

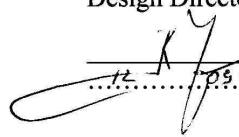
JSC "SPORTINĖ AVIACIJA"	Page 1
Service Bulletin No. 019.5.52.003 A	Pages 8

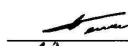
JSC "Sportinė aviacija"
General Director
 S. Skalskis
19 09 2005

Service Bulletin No. 019.5.52.003 A

**Inspection of the rudder control cable
in pedals joint zone**

JSC "Sportinė aviacija"
Vice-General Director
 V. Sabeckis
19 09 2005

AB "Sportinė aviacija"
Design Director
 K. Juočas
19 09 2005

AB "Sportinė aviacija"
Service engineer
 K. Gečas
19 09 2005

2005

JSC “SPORTINĖ AVIACIJA”	Page 3
Service Bulletin No. 019.5.52.003 A	Pages 8

1. Subject: Inspection of the rudder control cable in pedals joint zone after every 100 flight hours.

The copies of the service bulletin No. 019.5.52.003 A are sent to:

1. Civil Aviation Administration of the Lithuanian Republic (CAA) – 1 copy;
2. EASA RP for LAK-19, LBA, Germany - 1 copy;
3. Aviation authorities of countries, which issued Type Certificates for the LAK-19 - 1 copy;
4. For the known owners of LAK-19 or administration of organizations (clubs) having LAK-19 gliders – 1 copy.

2. Affected:

Type: LAK-19
Manufacture: AB “Sportinė Aviacija”, Pociūnai, LT-59327 Prienai, Lithuania.

Serial numbers affected: Serial numbers from 001 to 002 inclusive.

Original type certificate: TC Nr.15 issued by Directorate of Civil Aviation of the Republic of Lithuania, following EASA Type Certificate EASA. A. 012.

3. Reason: Broken strands in the area where the cables pass through the “S” tubes on the rudder pedals of glider LAK-17A S/N 117. Gliders LAK-19 from serial N° 001 to N° 002 inclusive have no plastic tube ¼” PT23004NA WEAHERHEAD in the “S” tubes on the rudder pedals (see draft N° 2).

4. Time of compliance: This service bulletin must be accomplished immediately after receiving it.

5. Actions: On finding the broken strands in the area where the cables pass through the “S” tubes on the rudder pedale you must:

- 5.1 To dismantl turn buckle pos. 3 (see Sketch N° 1).
- 5.2 To dismantl damaged control cables pos. 4 (see sSketch N° 1 Zone C).
- 5.3 To mount 2 plastic tubes ¼” PT23004NA WEAHERHEAD l=270mm in the “S” tubes on the rudder pedals according Sketch N° 2.
- 5.4 To press nicopress stop sleeves 871-18-J on the control cables LAK-17 52 00 04 00 SB according Sketch N° 3 after mounting control cables in the plastic tubes and with part LAK-17 52 00 00 04.
- 5.5 To mount and join control cables LAK-17 52 00 04 00 SB according Sketch N° 1 Zone C.
- 5.6 To join control cables LAK-17 52 00 04 00 SB with pressed nicopress stop sleeves 871-18-J with turn buckle pos. 3 and secured by lock wire according Sketch N° 1.
- 5.7 Replace “ Maintenance manual for the LAK-19 sailplane” page 5/3 (section 5) with the new reviced page, update list at effective pages and list at revision.

JSC “SPORTINĖ AVIACIJA”	Page 4
Service Bulletin No. 019.5.52.003 A	Pages 8

6. Mass and balance: The described actions do not affect C.G of the glider.

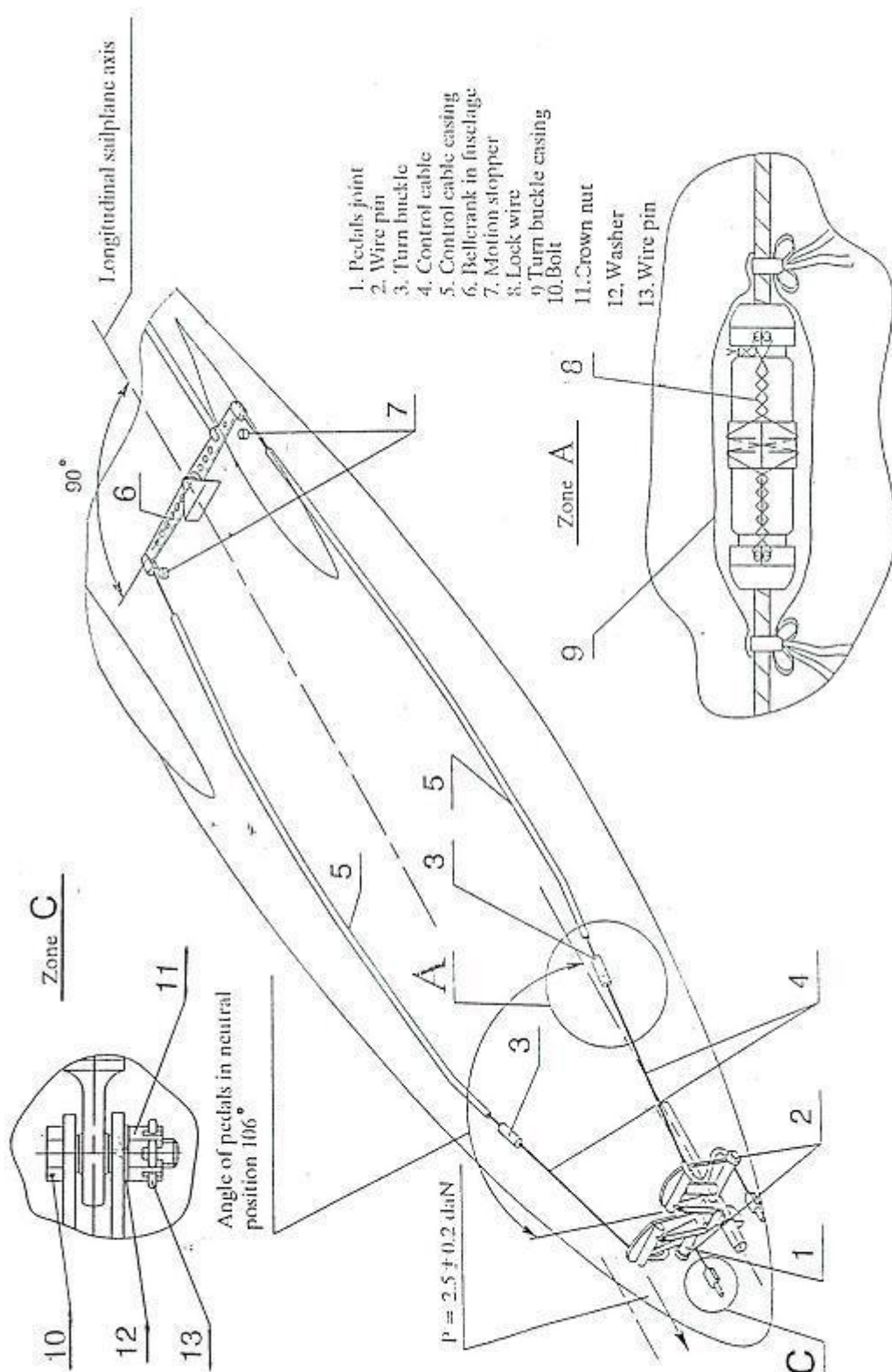
7. Documentation and materials:

- 7.1 “Maintenance manual for the LAK-19 sailplane”. 2
- 7.2 Control cable LAK-17 52 00 04 00 SB pos. 4 (see Sketch N°1) 2
- 7.3 Nicopress stop sleeves 871-18-I 2
- 7.4 Tubes ¼” PT 23004NA WEAHERHEAD l=270 mm 2

8. Accomplishment and

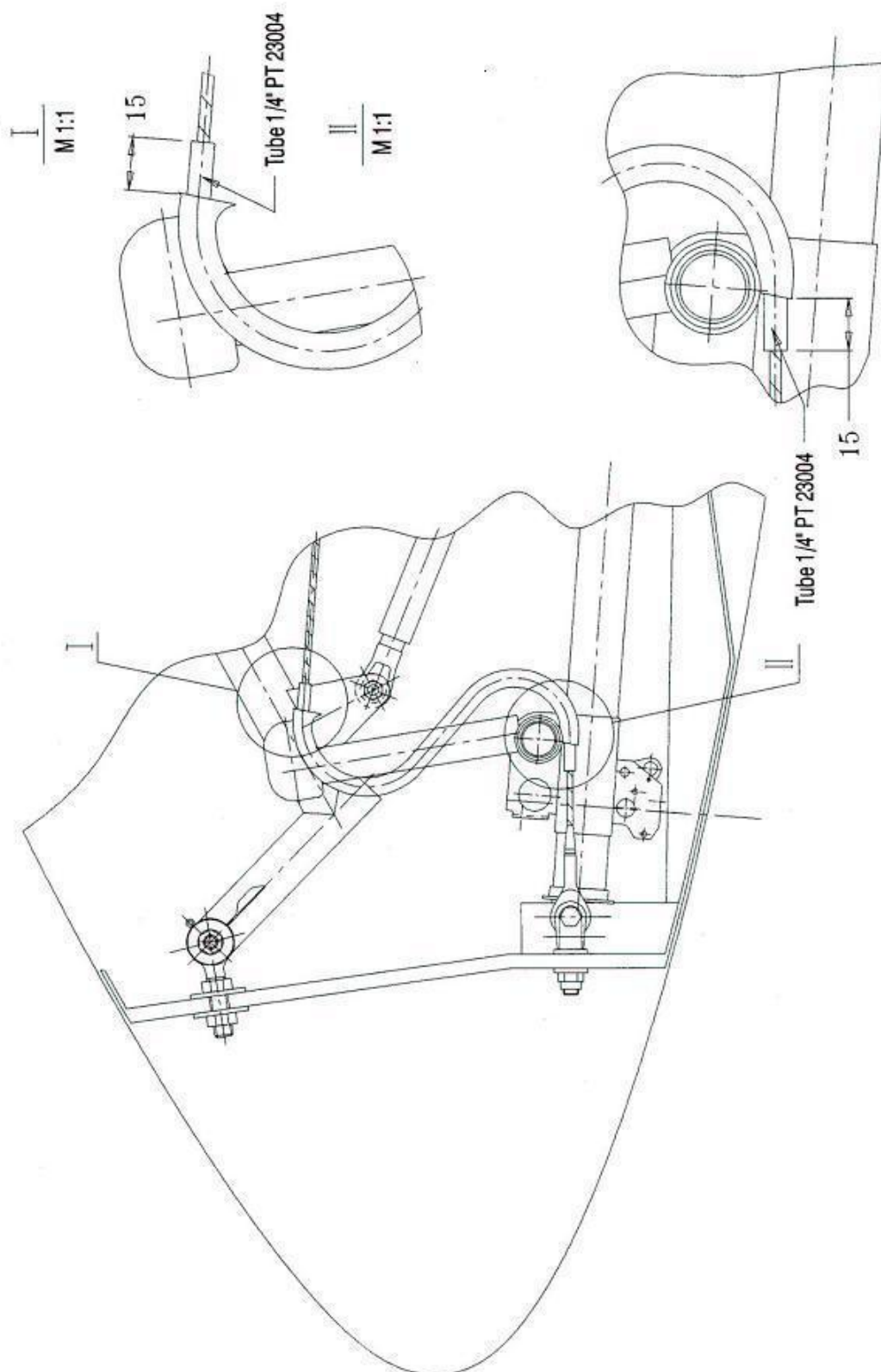
log entry:

This service bulletin has to be made by certified person. The compliance of this service bulletin must be checked and entered in the glider’s logbook following the operator’s national regulations.

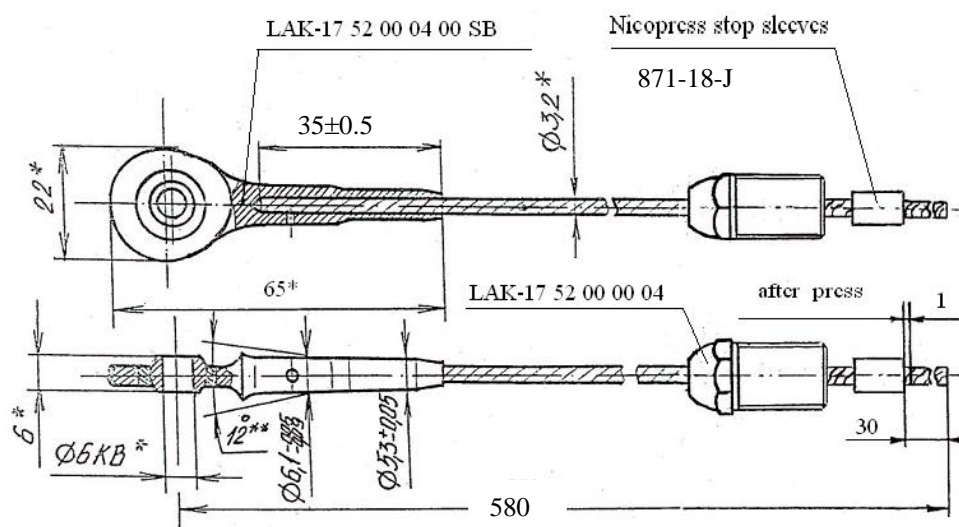


Sketch No 1

JSC "SPORTINĖ AVIACIJA"	Page 6
Service Bulletin No. 019.5.52.003 A	Pages 8



Sketch No 2



Sketch N°3

LAK-19		MAINTENANCE MANUAL		Section 5	Page 5/3 Pages 8
<div> <div>Inspection after every 100 flight hours</div> <div>Date.....</div> </div>					
No	Checking	Conformity Yes/No	Signature		
313	Elevator control unit on the fin top state				
314	Water ballast control system				
315	Condition of external surfaces of accessible metal parts (corrosion)				
316	Outside things in fuselage revision				
317					
318					
319					
320					
400	Horizontal tail				
401	Surfaces of horizontal tail (painting, cracks, comes of) condition				
402	Defects of skin (drive in, holes, etc)				
403	The glue together places state				
404	Elevator root ribs				
405	Stabilizer hubs				
406	Elevator, its hinges, pins, clearances of the elevator, control connections				
407	Elevator and fuselage connection state				
500	Rudder				
501	Surfaces of rudder (painting, cracks, comes of) condition				
502	Defects of skin (drive in, holes, etc)				
503	The glue together places state				
504	Rudder, its hinges, pins, clearances of the rudder, control connections				
505					
600	Landing gear				
601	Stands, shock absorbers, gas-spring and control system state				
602	Main wheel state, pressure in wheel tyre				
603	Main wheel retracting and releasing mechanisms, special attention for inspection bellcrank (pos.3 Fig 2-11 Landing gear control)				
604	Landing gear brakes state				
605	Tail wheel state, pressure in wheel tyre				
700	Control systems				
701	Elevator control system (mowing, friction, clearances, fixings)				
702	Ailerons control system (mowing, friction, clearances, fixings)				
703	Airbrakes control system (mowing, friction, clearances, fixings)				
704	Rudder control system (mowing, friction, clearances, fixings), special attention for inspection control cables in zone pedals joint (pos.4 Fig2-8a Rudder control)				
705	Pedals adjust according pilot height system state				
706	Trimmer control system functioning				
707	Tow release control system (mowing, friction, clearances, fixings)				
708	Attachment of cockpit canopy and its emergency jettison system functioning				
709	Canopy ventilation control system				
710	Water ballast control system functioning				
711					