

 N54°39.3' E024°03.5'	<h2>Technical note</h2>	Doc. No. 017.25.001
		Revision 0
		Date: 2025-10-30
"SA ir Ko" EASA.AP160	<b>Replacement of the shunt screws</b>	Page 1 of 3

**Subject:** FES system: improved screw connection of the connection cables to the shunt.

**Applicability:** LAK-17B FES – all serial numbers;  
LAK-17B FES mini – all serial numbers from sn 046 (inclusive);  
LAK-17C FES – all serial numbers from sn 309 (inclusive);

**Reason:** A shunt (small resistor) is installed in the cable between the negative pole of the battery and the controller to measure the current from the FES batteries. The screw connections of the large connection cables on the shunt were originally made with brass screws. These brass screws have torn off in several cases, possibly due to excessive tightening torque. To make this screw connection more robust and reliable, the brass screws are replaced by steel screws.


**Actions:**

1. Verify the type of screws. The shunt is located on the left wall of landing gear box.  
If the screw connection is already fitted with steel screws, no change is to be made.
2. If the screw connection is made with brass screws, these must be replaced with steel screws in accordance with the accomplishment instructions provided in this document.

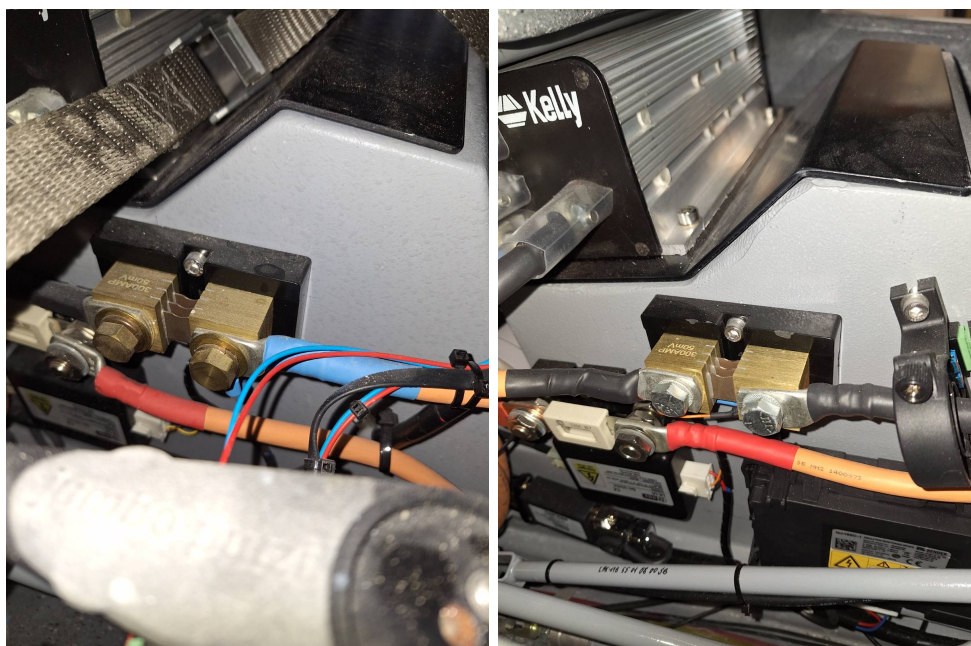
Whether the screw connection is made with steel screws (galvanised, light silver colour) or brass screws (bright brass) can be seen through the main spar window. (fig. 1a, fig 1b).

**Weight and Balance:** This modification does not affect the C.G. of the sailplane. A new weight and C.G. determination is not necessary.

**Release to Service:** The actions may be accomplished and released within the scope of the restricted pilot/owner maintenance.

2025-10-31	Pociūnai, Prienai, Lithuania	UAB "Sportinė aviacija ir KO" Chief Designer  /M. Andrikaitis
------------	------------------------------	---

 N54°39.3' E024°03.5'	<h1>Technical note</h1>	Doc. No. 017.25.001
		Revision 0
		Date: 2025-10-30
"SA ir Ko" EASA.AP160	Replacement of the shunt screws	Page 2 of 3



(a) Shunt with brass screws

(b) Shunt with steel screws

**Figure 1**

**Accomplishment instructions:**

The brass screws previously used to fasten the high-current cables to the shunt must be replaced with steel screws.

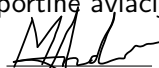
The shunt is located under the plastic cover, on the left wall of landing gear box (Fig. 2a).


The connection cable of the batteries must be disconnected during maintenance work.

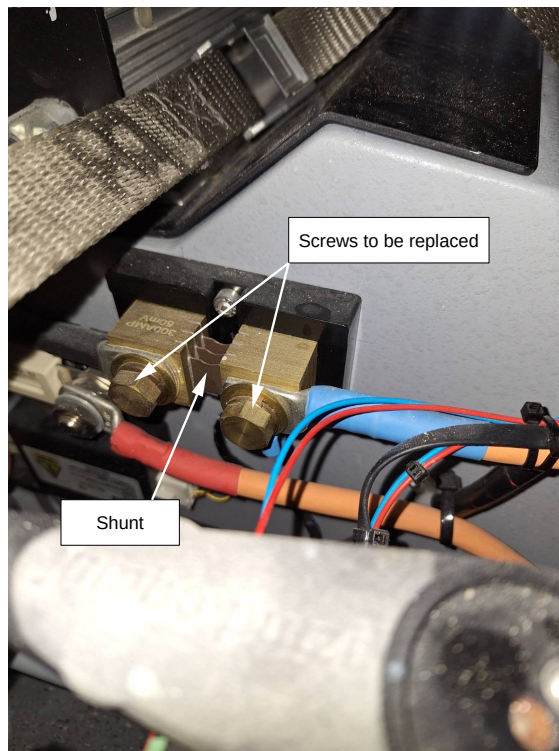
After removing the plastic cover, the brass screws including the brass washers on the shunt connections can be removed. When installing the new steel screws with the new lock washers, ensure the correct orientation of the lock washer (Fig. 2b). The steel screws are additionally secured in the threaded area with medium-strength screw locking adhesive (Loctite 243 or similar). The tightening torque is 17 Nm. The plastic cover must then be refitted.

**PARTS LIST**

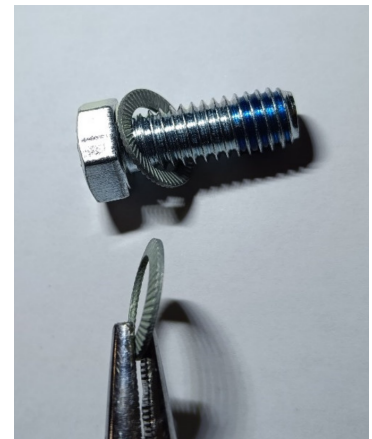
ITEM NO.	DESCRIPTION	QTY
A2-01	DIN 933 3/8" -16 UNCx5/8 (16mm) 8.8 Znp bolt	2
A2-02	SCHNORR M10 (3/8") Znp spacer	2

2025-10-31	Pociūnai, Prienai, Lithuania	UAB "Sportinė aviacija ir KO" Chief Designer  /M. Andrikaitis
------------	------------------------------	---

 N54°39.3' E024°03.5'	<h1>Technical note</h1>	Doc. No. 017.25.001
		Revision 0
"SA ir Ko" EASA.AP160	<b>Replacement of the shunt screws</b>	Date: 2025-10-30
		Page 3 of 3

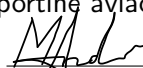


(a)



(b)

**Figure 2**

2025-10-31	Pociūnai, Prienai, Lithuania	UAB "Sportinė aviacija ir KO" Chief Designer  /M. Andrikaitis
------------	------------------------------	---